

What is the weather like in the UK?

In this unit of work the children will learn about different weather types in their environment along with the four seasons. Children will learn how to observe and record different weather types. We will explore how weather affects us in the clothes we wear, how we travel and the things we do.

In this unit children will:

- Develop knowledge of types of weather in the UK.
- Locate the UK on a world map.
- Detect daily changes in the weather.
- Know how to identify seasonal changes in weather.
- Distinguish weather symbols.
- Learn how to observe and record weather.
- Identify comparisons between different weathers and locations.
- Understand why affects us in the clothes we wear, how we travel and the things we do.
- Recognise the dangers of some weather.

Prior Learning

EYFS

Cross Curricular Links

DT Making kites and weather based construction

Art Weather based art

Literacy Acrostic season poems

Key Vocabulary

weather – the daily changes in the condition of the atmosphere.

observe – to pay close attention to something to gain information.

record – written evidence about the past.

Weather symbols – are 'pictures' or 'signs' to help us understand a type of weather e.g. sunny, windy, cloudy.

seasons – four parts of the year with different weather patterns and daylight hours.

affect – make a difference to something.

dangers – a cause of harm or injury.

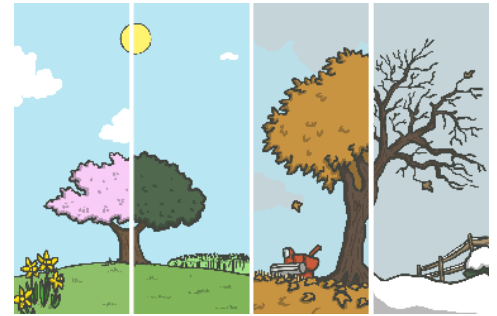
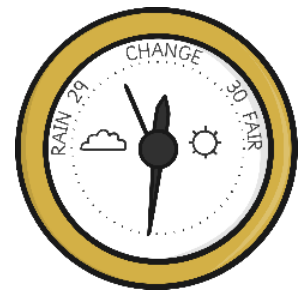
weather station - a place where information is collected about local weather conditions.

weather instrument - an instrument used to measure and record the weather.

weather forecast - a prediction of what the weather will be like.

Key Knowledge

- Weather is the way the air and the atmosphere feels. It includes the outside temperature, strength of the wind, and whether it is raining, sunny, hailing, snowing, sleet, foggy, or cloudy.
- The weather changes regularly and tends to be different during different seasons and across different countries.
- Weather symbols are used as a 'quick' and 'easy' way to show the weather that is happening in a particular place on a weather forecast.
- Weather is predicted using satellite images of the Earth and weather stations.
- There are differences in the weather, length of day light available and plant life during the seasons.
- In autumn the amount of time it is light becomes less, the leaves start to change colour and fall off the trees.



- In spring the weather usually turns warmer, trees begin to grow their leaves, plants start to flower and young animals such as chicks and lambs are born.
- In summer the weather is usually warm, trees have full green leaves and the amount of time it is light for during the day is longer.

Key Questions

- What is weather?
- Can you name different types of weather?
- How can we record the weather?
- What happens to the weather in different seasons?
- What is the weather like today?
- Why is it useful to measure and record the weather?